



Charitable Advisors

# Not-for-profit News

INDIANAPOLIS

sponsored by



April 19, 2016

Have a second quarter story idea for the Not-for-profit News?

[Click here to submit it.](#)



[Subscribe](#) | [Unsubscribe](#) | [Forward](#)

## In This Issue

[FEATURES](#)

[LOCAL NEWS](#)

[TRENDS / RESOURCES](#)

[MARKETPLACE](#)

[JOBS](#)

[SUBMIT NEWS](#)



FEATURES

## A proven ground for board service

By Lynn Sygiel, editor, Charitable Advisors

When Forbes magazine published its list of 20 Best Cities For Young Professionals last month, Indianapolis was No. 10.

But Jesamyn Sparks, Shae LeDune and Trevor Bruner would take the description one step further: Indy has a vibrant young professional network. And the three have had a hand in creating it.

Bruner is co-president of the executive committee of Agave, the Eiteljorg Museum's young professional group. LeDune is an executive committee member. Sparks is president of the Ronald McDonald House's Young Professional Board, and has assumed other leadership responsibilities during her five years as a volunteer.

While young professional boards are a relatively recent phenomenon, nationally, nonprofits have begun to find opportunities to capture the attention of the 21-to-40-age group.



"I think that nonprofits are really recognizing the value of tapping into a slightly different demographic than traditional boards. It's really about thinking ahead and keeping the boards fresh," said Sparks. "It's great to see organizations around town that are embracing that strategy to start cultivating those board members earlier."

Sparks credits the Ronald McDonald House with having the foresight to recognize this untapped resource seven years ago. Agave got its start 10 years ago. [Read more.](#)

---

Learn more about the [Ronald McDonald House Young Professional Board](#) and the [Eiteljorg's Agave](#).

Learn more about Indianapolis's [young professional groups](#).

---

## Sponsor's insight

### IACED helps members excel

*By Jessica Love, associate executive director, IACED*



Organizations working in the community economic development field — regardless of the services they provide or development activities they conduct — have similar needs. They all require funding, connections, capacity and advocates to accomplish their work.

To help meet that need, six organizations came together 30 years ago to create the Indiana Association for Community Economic Development (IACED). Their purpose was to bring nonprofits, government agencies and private businesses together to advance work with Indiana communities and residents.

Now 200 members strong, IACED's mission is to support the network of organizations to build vital communities and resilient families. IACED advocates for public policies and assists this network to develop comprehensive solutions that engage local leadership in order to generate private and public investment. [Read more.](#)



## LOCAL NEWS

### People on the move



**Kimberly Ewing** has joined Starfish Initiative as chief operating and program officer. She previously served as director, multicultural services and

professor, American History at Vincennes University. — *Inside Indiana Business*



The International Center has hired **Logan Charlesworth** as its marketing and communications associate. Charlesworth previously worked at Well Done Marketing.



Trine University has named **Dave Jarzyna** as vice president of marketing and communications. He previously served as associate



**Chad Ahren** has been hired at Lumina Foundation as a strategy officer. He most recently worked at IUPUI where he served as director of the office of student

involvement. — *Inside Indiana Business*



The Indiana State Museum and Historic Sites has hired

**Madeleine Smith** as director of development. Smith joins the team from Purdue University,

where she was director of development in the School of Electrical and Computer Engineering.

vice president of marketing at Hamline University in St. Paul, Minnesota. — *Inside Indiana Business*



Rose-Hulman Institute of Technology has named **Anne Houtman** vice president for academic affairs. For the past three years, she has been dean of the School of Natural Sciences, Mathematics & Engineering at California State University at Bakersfield. — *Inside Indiana Business*

## Announcements

**Little Red Door Cancer Agency** received a \$10,000 grant from Eli Lilly and Company for the agency's Big Red Bash Experience. This grant allow the 2016 Big Red Bash Experience to return to Indy Pride, Indiana Black Expo Summer Celebration and Indiana State Fair. Over 21 days, Little Red Door will promote nutrition, physical activity, tobacco cessation and sun safety education.

Nonprofits in five Midwest cities share donations from this year's **Brackets For Good tournament**, which brought in \$1,364,669, in addition to \$50,000 in presenting-sponsor grants. Indianapolis-based Brackets For Good, which pairs with corporate and nonprofit sponsors to host online, bracket-style fundraising tournaments, has now raised more than \$2.75 million for local charities since its 2012 kick-off contest in Indianapolis.

The **Indiana Food Scrap Initiative (IFSI)**, a new multi-stakeholder initiative designed to reduce food waste in Indiana, will explore the issues that cause food waste and will work to divert as much food from disposal as possible. An estimated 35 million tons of food is discarded each year in the U.S., equaling \$165 billion in food waste. [Learn more.](#)

**New teacher scholarship aims to keep top students in Indiana.** Gov. Mike Pence ceremonially signed a bill that will provide up to \$7,500 a year to cover tuition for students who commit to teaching in Indiana for at least five years. The Next Generation Hoosier Educators Scholarship will start in the fall of 2017 and up to 200 students will be selected to receive the scholarship. [Read more.](#)

The Indiana University Public Policy Institute honored **Brian Payne** with the John L. Krauss Award for Public Policy Innovation. Payne is president and chief executive officer of the Central Indiana Community Foundation. [Read more.](#)

**Irene Lilly McCutchen** and **William McCutchen Jr.** were honored by the Indiana University Lilly Family School of Philanthropy during the Spirit of Philanthropy Awards ceremony. The McCutchens, long active with nonprofit organizations, make philanthropy a part of their daily lives through their volunteer work and generous giving. Irene serves on the Lilly Family School of Philanthropy's Board of Visitors and Bill co-chairs a campaign for Duke Divinity School.

**Launch Cause** open house on April 28 from 4 to 7 p.m. To see the co-working space (5724 Birtz Rd.) dedicated to nonprofits, [please register here.](#)



Forward  
Thinking

Not-for-Profit Expertise  
Accounting, Audit &  
Business Advisory



**VonLehman**  
CPA & ADVISORY FIRM

800.887.0437 [vcpa.com](http://vcpa.com)  
Kentucky Ohio Indiana



**JGA** Johnson  
Grossnickle+  
Associates

**FREE Webinar**  
Inspiring Case Statements

May 12 • Register Now

## Professional development

**How to get your board "onboard" and aligned** webinar on April 21 from 1:00 - 2:00 p.m. (EDT). Your board members are an extension of your organization, and just like you and your team, they are best equipped to support and propel your mission forward when they are strategically aligned. For more information and to register, [click here](#).

**Financial oversight: Pushing beyond the budget to sustainability** webinar on April 28 from 2:00 - 3:00 p.m. (EDT). Have you considered your financial results in light of your programming mix? Do you bring your board into strategic discussions about viewing the finances through a more programmatic lens to help the organizations leadership decide where to focus its efforts? BoardSource members \$0 / nonmembers \$75. For more information, [click here](#).

**Wellness done well — affordably!** HR peer group on May 19 from 8:30 -10:00 a.m. at Central Indiana Community Foundation (1405 Broad Ripple Ave.). With the proper cultural integration of a focused process strategy, a great workplace health initiative can be accomplished with minimal impact to your budget. To register, [click here](#).

**From 0 to 100! Revving up your board's engagement** webinar on May 26 from 3:00 - 4:00pm EDT. A common frustration of board chairs and executive directors is the limited participation of some board members. Cost: BoardSource members \$0 and nonmembers \$35. For more information and registration, [click here](#).

[BACK TO TOP](#)



**BKD**  
LLP  
CPAs & Advisors

Insightful Solutions for  
**Not-for-Profit Clients**



**SYNERGY**  
Reinventing Your HR

[MySynergy.com](http://MySynergy.com)



## Volunteer opportunities

Please send your needs and donations of supplies, equipment, and furniture plus volunteer opportunities and requests to [IndyNews@NotforProfitNews.com](mailto:IndyNews@NotforProfitNews.com).

Help create a world free of multiple sclerosis, volunteer for **Walk MS: Indianapolis** on April 23. Two



shifts available at 6:00 a.m. and 1:00 p.m. at Celebration Plaza in downtown Indianapolis. Learn more or [register here](#) or contact Tricia Bishop at [tricia.bishop@nmss.org](mailto:tricia.bishop@nmss.org) or 317-870-2520.

**Indianapolis Opera** seeks volunteers to support Mozart's Attic: Midtown Community Flea Market at the Basile Opera Center (4011 N. Pennsylvania St.) on April 29 and April 30. Shifts available throughout the day. For more information, contact Carol at [carolb@IndyOpera.org](mailto:carolb@IndyOpera.org) or call 317-283-3531.

**Friends of Holliday Park** is looking for volunteers for Ruins Garden Planting Day on May 14. Join Friends of Holliday Park to plant new gardens, revitalizing the Ruins. Guidance will be provided to non-seasoned gardeners. Commitment is four hours. [Click here for more information.](#)

A group of female **Lutherwood** residents are preparing for the GED or TASC examinations and volunteers are needed to teach these girls high school algebra and geometry. Background checks required. If you would like to share your knowledge, please e-mail [volunteers@lutheranfamily.org](mailto:volunteers@lutheranfamily.org).

---

## Swap

To submit an item, [click here](#).

**NEED:** The Sharing Place (6501 Sunnyside Rd.) is in need of food options: peanut butter, jelly, large cans of tuna, chicken with matching helper, spaghetti sauce with pasta or pork and beans. For hours of operation, [click here](#).

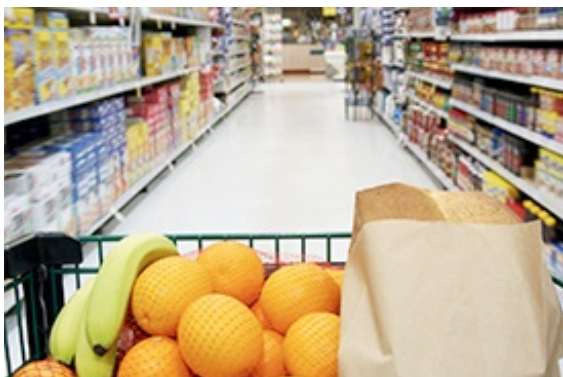
<b>FTM</b> Financial Technologies & Management	<b>Accounting Solutions</b> for your nonprofit
	Bookkeeping CFO Advisor Accounting Software Advisor Controller
www.ftmllc.com   info@ftmllc.com   888-609-5692	

Take your career to the next level; earn your <b>M.A. in Philanthropic Studies</b> from anywhere in the world!	
<b>EXECUTIVE MASTER'S PROGRAM</b> COMPLETE YOUR DEGREE IN JUST THREE YEARS!	
 <b>IUPUI</b> LILLY FAMILY SCHOOL OF PHILANTHROPY	<a href="#">Learn more!</a>



## TRENDS / RESOURCES

### National news



[Funding the nonprofit grocery store.](#) Over 2.3 million people live in food deserts, but a variety of models to maintain neighborhood stores are being tried to continue access to healthy food.



[Three insights that will change the way you do #Nonprofit Work.](#) If you weren't able to attend the Association of Fundraising Professionals International Fundraising Conference, several attendees share highlights.

[The Blackbaud Index reported](#) that overall charitable nonprofit giving increased 1 percent while online giving increased 10.2 percent for the three months ending February compared to the same period in 2015.




[The value of foundations that operate forever.](#) Sherry Magill reacts to Ray D. Madoff and Rob Reich call for an intellectual debate about the value of perpetual charitable endowments.

---

## Sponsors' insights

*Johnson Grossnickle & Associates.* [Gain insight and clarity with a development assessment.](#) The impulse to have an assessment of development programs is almost always an indicator of both strategic capability, a willingness to improve and be better.

**Audit - Review - Compilation**  
TAX & ACCOUNTING SERVICES  
GOVERNANCE EDUCATION



**Alerding**  
CPA GROUP



changing how you feel about IT

**Technology Guidance & Support for the not-for-profit community.**



MARKETPLACE

## Services

*Our sponsor marketplace serves to further connect our readers with our advertisers who are focused on serving nonprofits. Please keep in mind that you should always check references before hiring a consultant or vendor. Contact Bryan at [Bryan@charitableadvisors.com](mailto:Bryan@charitableadvisors.com) or 317-752-7153 to learn how your business or*

## Legal/Administrative

**Charitable Allies:** nonprofit that provides affordable, experienced nonprofit legal services.

## Human resources

**Synergy:** professional employer organization (PEO), Synergy assumes the risk and liability of employing employees, and administers payroll, benefits and human resources.

**FirstPerson:** professional advisory firm that creates meaningful work experiences through benefits, HR and wellness solutions.

## Technology, software, services

**FTM LLC:** software advisor to improve organization's financial operations with system implementation, training and support.

**Netlink, Inc.:** An information technology service provider delivering best practice information, technology guidance, implementation and support in order to contribute to nonprofits' mission and success.

## Finance/accounting/bookkeeping

**Alerding CPA Group:** accounting firm with nonprofit experience provides audits, accounting, tax services, planning and board governance.

**BKD:** CPAs and advisors offering services in assurance, tax, risk management, technology and forensic to closely-held businesses, nonprofit organizations and individuals.

**FTM LLC:** works solely with nonprofits on bookkeeping, audit preparation, outsourced controller and CFO services.

**VonLehman CPA & Advisory Firm:** serves over 300 diverse nonprofit clients by providing expertise in assurance services, accounting, tax, internal controls, OMB compliance, performance improvement, board governance and consulting.

## Fund development

**The Indiana Philanthropy Alliance:** brings back its Directory of Indiana Grantmakers. The searchable, online database, includes profiles for over 1,000 funders of Indiana nonprofits. Pre-order now for early-bird pricing; available at the end of the first quarter.

## Banking/asset management

**The National Bank of Indianapolis:** the bank of choice for nonprofit organizations.

## Transition/retirement

**Alerding CPA Group:** provides board governance, training, consulting and succession planning.

**Charitable Advisors:** BoardSource-certified governance trainer, support for board-led ED/CEO search process.

## Metamorphosis Change

**Agents:** Specializes in leadership transitions and organizational development for small to mid-sized nonprofits and associations.

## Education/training

### **School of Public and Environmental**

**Affairs at IUPUI:** At SPEA, people learn how to work in government, nonprofit and business roles to make positive changes in their communities, their states, their countries and the world.

### **Indiana University Lilly Family School**

**of Philanthropy:** Our programs are the first in the nation to focus on philanthropy's history, culture and values. Through traditional or online master's degree programs, gain the knowledge and skills necessary to pursue further graduate study or to enter the field as a nonprofit professional.

### **The Indiana Association for Community Economic Development (IACED):**

supports a network of organizations to build vital communities and resilient families through community building, training, technical assistance and advocacy.

### **Trine University:** The School of

Professional Studies is dedicated to serving adult students. Offering bachelor and master degrees with coursework both on-site and online. Accelerated classes start every eight weeks and multiple tuition discounts are available for those who qualify.

## Leadership Development

### **Johnson, Grossnickle and Associates:**

Authentic strategic and philanthropic consulting firm that offers client-focused, highly-customized solutions. The firm specializes in assisting nonprofit groups with strategic planning, capital campaigns, development audits, feasibility studies and general fundraising counsel.

### **Radiancy Coaching Partners:** Leadership

coaching and personal development for nonprofit staff, volunteers and board members to help get the right projects done with heart.

**Leadership Indianapolis:** develops and mobilizes a robust pipeline of community leaders to address and solve the issues and opportunities facing the growing metro area.



**charitable allies**  
your nonprofit advocate

**The nonprofit lawyers**

charitableallies.org  
317.429.1649



**CUSTOMIZED TRAINING FOR STAFF, BOARD, VOLUNTEERS**

SPEA at IUPUI executive education program  
execedspea.iu.edu | 317-274-3418

**Ψ**  
IUPUI  
SCHOOL OF PUBLIC AND ENVIRONMENTAL AFFAIRS  
INDIANA UNIVERSITY  
Indianapolis

## Real estate

**PLACE A REAL ESTATE AD**

*Get that extra office space leased or that extra building sold by using the new NFP News real estate section to let people know you have extra space, an extra building or even residential property for sale. Photos and a web link may be included to give readers more information. To learn more, contact Julie at [Julie@CharitableAdvisors.com](mailto:Julie@CharitableAdvisors.com)*



### **Affordable Near-Southside office space**

**DOWNTOWN** 300 to 10,000 sq. ft. Great location at I-65 and South Keystone Avenue (3530). Five minutes from downtown with easy access to all Indianapolis. Free parking. Many restaurants nearby. Other nonprofits on site. Low rates: \$10 to \$12 per square foot depending on space size. Call Ron at: 317-702-6079.



### **The Sol Center is the perfect place for your next gathering**

Host your next business meeting, board meeting, social gathering or board retreat at the Sol Center, home to Meal on Wheels. Located downtown, its 2,500-square-foot ballroom is handicap accessible and seats 150 people. The space offers such amenities as a state-of-the-art A/V system, dual 10 ft. x 7 ft. ceiling-mounted screens, small stage and podium, a caterer's staging kitchen, coatroom and free-lighted parking. Rental income is used to subsidize meals for our low-income clients. For information, contact Vicki Burdick at 317-252-5558.





### Vibrant nonprofit setting

Conveniently located near Butler University, Christian Theological Seminary, and the Indianapolis Museum of Art (42nd and Michigan Rd.) and available to all "nonprofit" organizations representing education, advocacy, faith and social services. Amenities include

special introductory rates, full-service leases, nicely-equipped conference rooms of various sizes, ample free parking, and helpful on-site management. Contact us at 317-923-3617 or [iic@indianainterchurch.org](mailto:iic@indianainterchurch.org).



### For emerging nonprofits

**Nonprofit co-working office space** in historic Lawrence Village near Fort Harrison State Park. The co-working space, 6,800 sq. ft., is fully furnished and includes WiFi, elevator access and parking and is offered by Launch Cause. The nonprofit is dedicated to helping emerging nonprofit organizations. Multiple

leasing options are available and space scholarships. [Learn more.](#)



### Westside church for sale

1402 N. Belleview Place, asking price is **\$700,000**. Spacious three-level church (18,900 square feet) with 600-seat sanctuary capacity; lower-level fellowship hall; beautiful stained glass windows; heated baptism pool; commercial kitchen. Plenty of options for office and classroom space. Great location for community outreach; located five minutes from downtown on a bus line. Facility has been approved for childcare ministry

operation as well. For more information, please call the church office at 317-635-1942.



### Located on the IUPUI campus

A full-service commercial office building with a total of approximately 9,400 rentable square feet located on the third floor. The space has two individual suites - one approximately 1,900 square feet and the second 7,400 rentable square feet. Close to Indianapolis downtown retail and dining facilities, just off Indiana Avenue and West Street. Parking near the offices.

Space is available for tenant occupancy. For more detailed information, please contact Thomas M. Popcheff at

[tomp@stti.org](mailto:tomp@stti.org) or 317-634-8171.



JOBS

# This week's jobs

PLACE A JOB AD

To view all jobs, visit the [Not-for-profit News jobs' board](#).

**Job ad special of \$77 for Intern/Americorps posts through April.** Please send ad copy to Kristen at [ads@charitableadvisors.com](mailto:ads@charitableadvisors.com). Deadline is Sunday evenings for Tuesday's newsletters.

## FUND DEVELOPMENT

**Grants Officer, Development-Fundraising Department - Planned Parenthood of IN & KY (PPINK).** Planned Parenthood of IN & KY (PPINK) currently has an opening for a Grants Officer for our Development-Fundraising Department. This is a Full Time...[more](#)

**Assistant Director of Fund Development - Tindley Accelerated Schools.** The mission of the Tindley Accelerated Schools is to empower its students - regardless of their past academic performance - to become successful...[more](#)

**Divisional Grants and Research Specialist - Salvation Army.** The Divisional Grants and Research Specialist is responsible for conducting research on grant opportunities and donor prospects; writing, editing and...[more](#)

**Vice President of Development - Girls Incorporated® of Greater Indianapolis.** Participate in the leadership team of the organization with specific responsibility for Development and PR strategy and implementation...[more](#)

**Advancement Director - Goodwill Industries of Central Indiana, Inc.** The Advancement Director (hereafter "Director") is responsible for the development and success of donor engagement within the Office of Community...[more](#)

## MARKETING/COMMUNICATIONS

**Director of Marketing and Communications - Indianapolis Neighborhood Housing Partnership.** The Indianapolis Neighborhood Housing Partnership (INHP) currently is recruiting for the position of Director, Marketing and Communications. This...[more](#)

**Assistant Director of Arts, Nonprofit Management, & Communications - University of Indianapolis.** The assistant director of Art, Nonprofit Management, and Communications will be responsible for maximizing student integration with faculty, staff, and...[more](#)

## FINANCE

**Controller - Edna Martin Christian Center.** EMCC has been growing steadily and is now seeking a full-time Controller to manage and develop its growth. The Board of Directors and Chief Executive...[more](#)



Be a leader worth following.

Leadership Development Cohort starting April 2016

Metamorphosis  
Change Agents



Streamlining Indiana GRANT SEEKING

DIRECTORY OF INDIANA Grantmakers 2016

Indiana Philanthropy Alliance  
Champion. Support. Connect.



BACHELOR AND MASTER DEGREES  
to fit your schedule

TRINE UNIVERSITY | AVON

avon@trine.edu • 317.954.1209  
trine.edu/adult-studies

## ADMINISTRATIVE/DATA

**Administrative Assistant - MLJ Adoptions International.** MLJ Adoptions International is seeking an individual who is highly-motivated, detail-oriented, friendly and passionate about orphan care to fill the full...[more](#)

**Philanthropy Data Analyst - Girl Scouts of Central Indiana.** The focus of this job is on producing high quality, detailed work based on established standards, guidelines and procedures. The position will focus...[more](#)

**Executive Assistant/Board Relations Coordinator, Database support (part-time) - International Center.** This position is responsible for providing support for effective maintenance of relationships between The International Center and various key stakeholder...[more](#)

## PROGRAMS

**Enrollment Specialist - Big Brothers Big Sisters of Central Indiana.** Enrollment Specialist manages communication and intake of new volunteer applicants from point of inquiry to interview; providing timely and high quality...[more](#)

**Care Team Nurse-LPN - Open Door Health Services.** Provides professional nursing care for clinic patients following established standards, practices, and protocols...[more](#)

**Direct Care Lead Ally (Program Manager) - Autism Society of Indiana.** The Autism Society of Indiana (ASI) is looking for a Direct Care Lead Ally to oversee and manage all aspects of ASI's Direct Care Program that provides both...[more](#)

## INTERNSHIP/VISTAS

**AmeriCorps VISTA positions - Indy Hunger Network.** Want to help grow and strengthen the hunger-relief system in Indianapolis? Indy Hunger Network sponsors several AmeriCorps VISTA positions to build...[more](#)

[BACK TO TOP](#)



## Last week's jobs

### FUND DEVELOPMENT

**Database & Development Coordinator - Keep Indianapolis Beautiful.** This position is responsible for all data and administrative aspects of the Development Department. Manages donor database, donor stewardship, data administration...[more](#)

**Gift Processing Associate - Indianapolis Symphony Orchestra.** This position manages all data entry and processing of donations to the ISO including pledges, payments and direct gifts into the

ISO's database system...[more](#)

**Director of Development - Cancer Support Community.** Design, implement and guide a successful and comprehensive annual program to financially support the organization in the areas of donor cultivation and giving...[more](#)

**Donor Relations Coordinator - Big Brothers Big Sisters of Central Indiana.** The Donor Relations Coordinator is instrumental to the Big Brothers Big Sisters mission to provide children facing adversity with strong and enduring, professionally...[more](#)

**Director of Development - Purdue Research Foundation.** The Purdue Research Foundation, University Development Office has an opening for a Director of Development in the College of Health and Human Sciences...[more](#)

**Senior Manager, Fund Development - Center for Leadership Development.** Innovative, dynamic youth development not for profit is seeking a self-directed, team-oriented Fund Development Manager who is committed to the organization's...[more](#)

## MARKETING/EVENTS/WRITING

**Regional Event Specialist - Indianapolis - ALSAC/St. Jude Children's Research Hospital.** ALSAC exists to raise funds and awareness for St. Jude Children's Research Hospital. Our staff is dynamic and diverse. Our skills are different, our professions...[more](#)

**Content Marketing Manager - CEDIA.** CEDIA seeks a talented writer to join its marketing team in the role of Content Marketing Manager. The Content Marketing Manager plans, coordinates, and implements...[more](#)

**Special Events & Marketing Coordinator - Junior Achievement of Central Indiana.** Junior Achievement's mission is to empower young people to own their future success. JA educates and inspires young people in the areas of career exploration...[more](#)

## ADMINISTRATIVE

**Foundation Administrative Assistant - Zeta Tau Alpha Foundation.** The Foundation Administrative Assistant assists the Foundation with various responsibilities and tasks essential to day-to-day operations. This includes, but is...[more](#)

## PROGRAMS

**Home Base Therapist(Full & Part Time) - All Things to All People Community Services.** The fundamental intent of the staff at All Things to All People Community Services is to create social infrastructures within families to allow them to effectively...[more](#)

**Education & Social Work Coordinator (part-time) - Brightwood Community Center (BCC).** Brightwood Community Center (BCC) is seeking a dynamic person for an exciting new opportunity! BCC is a small community center which is striving to make...[more](#)

**Director of Programs - La Plaza.** Responsible for designing, planning, implementing and evaluating the programs and services offered by La Plaza...[more](#)

**Career Services Advisor - Interlocal Association.** Interlocal Association has an opening for a Career Services Advisor in Fishers; may need to go on occasion to Noblesville. Interlocal Association is a public...[more](#)

**Clinical Hospital Program Coordinator - Cancer Support Community Central Indiana.** Cancer Support Community Central Indiana is seeking to hire a Clinical Hospital Coordinator to work with



cancer patients and their family members. Coordinator...[more](#)

**Charitable Advisors**  
Leadership Transition · Planning · Not-for-Profit News

Charitable Advisors LLC  
P.O. Box 501245  
Indianapolis, Indiana  
46250  
317-752-7153

*Not-for-profit News serves as a champion for the nonprofit sector by publishing good news and sharing educational resources to inform the field. We feature new nonprofit job postings each week to attract capable people to the sector.*

Charitable Advisors, P.O. Box 501245, Indianapolis, IN 46250

[SafeUnsubscribe™](#)

[Forward email](#) | [Update Profile](#) | [About our service provider](#)

Sent by [bryan@charitableadvisorsllc.com](mailto:bryan@charitableadvisorsllc.com) in collaboration with

**Constant Contact** 

Try it free today