



Charitable Advisors

Not-for-profit News

INDIANAPOLIS

sponsored by



June 28, 2016

Have a story idea for Not-for-profit News' third quarter? [Click here to submit.](#)



[Subscribe](#) | [Unsubscribe](#) | [Forward](#)

In This Issue

[FEATURES](#)

[LOCAL NEWS](#)

[TRENDS / RESOURCES](#)

[MARKETPLACE](#)

[JOBS](#)

[SUBMIT NEWS](#)



FEATURES

A long side profits, a shared value

By Lynn Sygiel, editor, Charitable Advisors

When Dora Lutz started her consulting company three years ago after working for a national trucking company, she planned to focus on nonprofit marketing.

One year into her venture, Lutz changed her focus after learning about the concept of corporate social responsibility (CSR) and how it has evolved over the years. For her, it became no longer only about marketing messages or brand goodwill, but also about sharing value and using innovative business practices to make the world a better place.

With that shift, Lutz started a sister company, Giving-Spring.com, to help nonprofits plan for this changing environment and help businesses create giving programs.

"Corporate social responsibility has kind of segmented out in a couple of different areas. You have corporate philanthropy, corporate social responsibility and now you have this third thing emerging called shared values," said Lutz. "Its principles eliminate the notion that social responsibility is a trade-off and instead provide a framework for collaboration, innovation and mutual benefit.

"You can kind of think about the segments as a continuum and have a bit of all three areas. In theory, a corporate partner is trying to say, 'How can we engage meaningfully in the community?'"



The idea of corporate shared value (CSV) originated from an article by Harvard Professor Michael Porter and Harvard Kennedy School of Government Senior Fellow Mark Kramer. The authors presented the concept of CSV in a 2006 Harvard Business Review article, and detailed it further in a January 2011 article.

In essence, companies try to address major social problems as a core part of their business strategies. [Read more.](#)



Starting a movement

By Indiana Chamber

Building on the successful Health Means Business event earlier this year is an upcoming program supported by the Indiana Chamber of Commerce Foundation and the Wellness Council of Indiana.

Healthy Business Fuel Healthy Communities is the focus on July 13 (10 a.m. to 3 p.m.) as the Indiana business and philanthropic sectors come together to explore how corporate engagement in community service can improve health for employees and all Hoosiers.

This learning and networking event is designed for business owners and leaders with an interest in finding ways to combine their corporate service, giving, and wellness efforts to benefit staff and the greater community. The content is also designed to link executives and program officers at corporate foundations with individuals involved with social responsibility and wellness programs.

Take this opportunity to connect, learn from and collaborate with like-minded organizations and discuss ways you can work together to address health needs in your community. Additional objectives include the following:

- Learn about Indiana's critical health needs and the social and economic factors contributing to them
- Understand how corporate community service and wellness programs benefit both companies and communities
- Understand how to leverage your internal resources to support wellness inside and outside your organization

For more information, [click here.](#) For registration, [click here.](#)



What creating shared value means for nonprofits

By Jocelyne Daw, founder and CEO, Daw & Associates

"What does shared value mean for the nonprofit sector? How will it affect fundraising? How will it affect our role in community?"

These are important questions. I firmly believe that Creating Shared Value (CSV) offers exciting new opportunities for nonprofits to collaborate with companies for mutual benefit, to build truly meaningful and impactful partnerships and advance positive social change.

Today most nonprofits view corporations as funders. Even though many nonprofits call their funding relationships "partnerships," they simply are not. Funding relationships are transactional exchanges in which financial support is given to fund community work. Occasionally in-kind talent and time is provided from employee volunteers. While these relationships are important and beneficial, the full value of a mutually beneficial partnership, which is based around common goals, is not realized.

Creating Shared Value is a new form of corporate community involvement. Shared value is created when companies generate economic value for themselves in a way that simultaneously produces value for society by addressing social and environmental challenges. Companies that undertake shared value initiatives need community partners to help them reconceive markets and services; build clusters; or reduce the costs in their value chain. Shared value initiatives require the expertise, experience and knowledge of the community sector. At its heart, shared value requires cross-sector collaboration and deep partnerships. [Read more.](#)

Executive education: Focus on leadership

By Sara Johnson, director of Executive Education, Indiana University School of Public and Environmental Affairs

As another presidential election campaign races to its conclusion, the topics of public management and leadership are getting a lot of attention and scrutiny. Questions such as "Whom do you trust?" or "Who is the most qualified?" are in the news every day.

For those vying for the top leadership position in the United States, there are obvious differences in style, experience and philosophy. Clearly, there is no "one-size-fits-all" approach to effective leadership of government and other organizations that exist to serve the public.

Still there are common bonds, and perhaps "serve the public" is the key phrase here. If we assume those who seek leadership positions in organizations that "serve the public" are there to truly serve, would we not expect them to be "servant leaders?" Robert K. Greenleaf, who established the Robert K. Greenleaf Center for Servant Leadership, first coined the term in 1970.

According to Greenleaf, this philosophy and set of practices focuses on "enriching the lives of individuals, builds better organizations and ultimately creates a more just and caring world." To create a more just and caring world, one must have a heart for serving others and exhibit effective leadership traits.

That's where taking courses in Public Management and Nonprofit Management can create an advantage. Skills learned and applied in these programs at the Indiana University School of Public and Environmental Affairs prepare leaders for the unique practices and challenges in organizations that serve the public. [Read more.](#)



LOCAL NEWS

People on the move



Life Centers is pleased to announce that **Brian Current** was promoted to be the new director of community partnerships. His primary role is to broaden and strengthen partnerships with local church

and community service organizations. Current was previously director of events and communication.



The Indianapolis Monumental Marathon hired **Swati Gunale** as strategic partnerships manager and will oversee implementation of partnership programs and business development initiatives. Gunale

previous position was with John Wiley & Sons, Inc., where she managed the leadership training and development franchise, Leadership Challenge®.

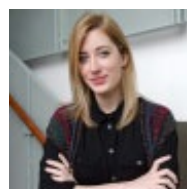


Alan Hill has been named vice president for student academic life and dean of experiential learning for DePauw University. He is a 1981 graduate of the university, a three-time all-American

athlete and was the school's first national champion.



Brad Miller has joined Indiana Landmarks as community preservation specialist in its northern regional office. He previously worked for the Somerville Historic Preservation commission in Somerville, Mass. — *Inside Indiana Business*



The Indianapolis Museum of Art has appointed **Shelley Selim** to associate curator of design and decorative arts. She comes from the Cranbrook Art Museum in Bloomfield Hills, Mich., where she served as Jeanne and Ralph Graham assistant curator. —

Announcements

Legacy Fund was awarded a \$1.5 million matching grant from Lilly Endowment's sixth phase of Giving Indiana Funds for Tomorrow (GIFT). Legacy Fund leveraged just over \$1,032,244 of the GIFT grant from Lilly Endowment to raise an additional \$657,825 for the Endowment for Hamilton County, a permanent fund used by Legacy Fund board of directors to allocate grants to a wide variety of nonprofits serving Hamilton County.

Early Learning Indiana's partnerships for Early Learners initiative recently launched a wide range of statewide services aimed to help children thrive. The expansion is funded through an agreement through next fall with the Indiana Family and Social Services Administration's Office of Early Childhood and Out-of-School Learning. For more information, [click here](#).

Indiana University plans to hire 40 new fulltime faculty members and spend as much as \$120 million on a new, ambitious initiative focused at understanding the factors that contribute to an individual's health and curing diseases that are now untreatable. [Read more](#).

The **Fletcher Place Neighborhood Association** was honored by the national nonprofit Neighborhoods, USA (NUSA) for its Virginia Avenue Folk Fest at the national annual conference. The folk fest finished first in the social revitalization category of the neighborhood-of-the-year competition and then went on to receive NUSA's top honor, the 2016 neighborhood-of-the-year grand prize.

The Indiana Historical Society has awarded its first-ever **Heritage Support Grants** to 25 organizations in 21 counties. The nonprofits will use the \$500,000 will support projects ranging from indoor and outdoor building repairs to historic painting restorations to the digitization of collections. IHS says the Heritage Support Grant program was established with the help of a grant from Indianapolis-based Lilly Endowment Inc. The organization will award \$2.5 million to nonprofits throughout Indiana in at least five cycles through 2019. — *Inside Indiana Business*

Nominate your donors and volunteers for an **Indiana Philanthropy Award**. Recipients will be honored at the Indiana Philanthropy Awards Dinner on Nov. 17 at the Indiana Roof Ballroom and will join a distinguished group of philanthropists. Nominations are accepted in 10 categories and are due July 15. [Read more](#).



Professional development

The joint fundraising role of executive directors and boards webinars on July 13 at 1:00 p.m. (ET). We're all on the same side, right? Sometimes it doesn't feel that way when executive directors and board members are working at odds and not communicating well. That's not a recipe for fundraising success! Join the amazing, outspoken, tell-it-as-it-is Joan Garry, our next fundraising masters guest, as she and Brian Saber, president of Asking Matters, discuss how to get everyone working together optimally for the good of the cause. [Register here](#).

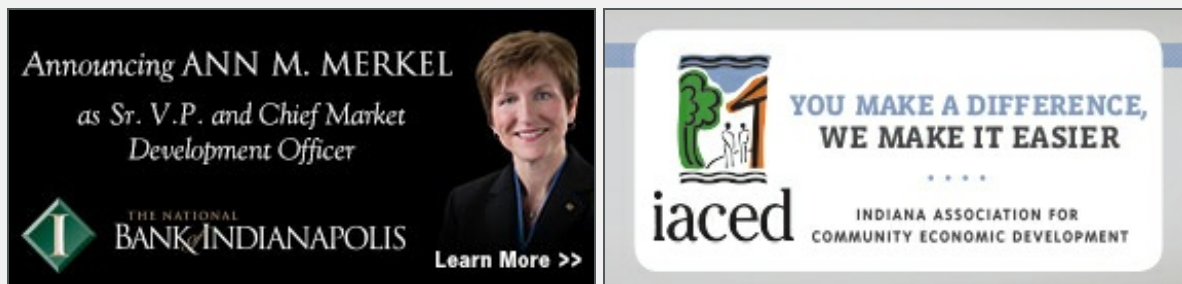
HR Peer Group: **How to build a performance-based culture** on July 21 from 8:30 - 10:00 a.m. at VonLehman (8250 Woodfield Crossing Blvd., Suite #300). If a nonprofit wants to continue to exist, it has to perform and report outcomes to its funders and stockholders. Creating such an environment is difficult when you are understaffed and wages are low. Join Jeremy York to explore how to create a results-oriented environment. For more information and to register: [click here](#).

Shooting better smartphone video for nonprofits on June 30 from 9:00 a.m. - 1:00 p.m. at Launch Cause (5748 Birtz Rd.). This hands-on crash course will teach you tips and tricks for shooting better smartphone video that will help you achieve a nonprofit's goals. Registration is free to Launch Cause members. Donations are suggested for non-members. [Learn more.](#)

Learn to be a leader at every level. Identify and better understand your own leadership style. Three-part leadership series: **What kind of leader are you?** on July 21, **How to share the vision** on Aug. 18 and **Manage your time and attention** on Sept. 22. You'll get the most out of these workshops if you attend all three, and you'll get a discount. If you can only attend one or two, you'll still learn valuable information, however. Cost: free Launch Cause members/ \$30 per workshop/\$75 for all three. [Learn more.](#)

Maximize the post-gift glow webinar on Aug. 9 from noon to 1:00 p.m. (CT). When donors make a gift, they feel highly engaged with a nonprofit. Maximize on the warm, fuzzy glow with a knock-their-socks-off thank you, and then reconnect with an inspiring follow-up to build long-term, lucrative loyalty. Free. To register: [click here.](#)

[BACK TO TOP](#)



Volunteer opportunities

Please send your needs and donations of supplies, equipment, and furniture plus volunteer opportunities and requests to IndyNews@NotforProfitNews.com.

The Ian Smith Foundation will host its 8th Annual Youth Summit, "The Blueprint of Success" on Aug. 6 from noon - 4:00 p.m. at the Edna Martin Christian Center. This event, designed to promote academic excellence, will have speakers, entertainment, school supplies and much fun. For more information on volunteering, please contact Ian Smith at iansmithfoundation@gmail.com.

The American Diabetes Association is seeking dedicated, fun, and creative individuals to serve on the its annual gala planning committee. Volunteers will assist with planning, auction procurement (asking donors for auction items), ticket sales and soliciting sponsorships for the event. Excellent for those interested in meeting new people, event planning, fundraising or being social! For more information, contact Judi Williams at juwilliams@diabetes.org or 317-352-9226 ext. 6727.

School on Wheels seeks to recruit, train and place new volunteers for the fall school semester to provide tutoring to youth experiencing homelessness in Indianapolis. To become a School on Wheels tutor, you must be at least 11 years of age (ages 11-13 must be accompanied by a parent or guardian). Tutors are asked to commit to one hour each week for a 15-17 week semester. For more information, contact Samantha Breeling at 317-202-9100 or at samantha@indysow.org.

Swap

To submit an item, [click here.](#)

NEED: Indiana Hope Bank is looking for business owners around the state of Indiana who are looking to serve on a nonprofit board. We are based in Indianapolis and serve the entire state. We provide hygiene and diapers to food banks, pantries across the state of Indiana and serve disaster-hit areas. [Learn more here,](#) or email IndianaHopeBank@gmail.com.

NEED: The Ian Smith Foundation (401 E. Michigan St.) is looking for school supplies (folders, notebooks and pencils) to equip 300 students who attend its Youth Summit in August. If you are

interested in donating, contact Ian Smith at iansmithfoundation@gmail.com.

DONATION: Arts for Learning has a number of desks, tables, bookshelves and chairs available. Contact: Haley Baas, hbaas@artsforlearningindiana.org or 317-925-4043.



Forward
Thinking

Not-for-Profit Expertise
Accounting, Audit &
Business Advisory



VonLehman
CPA & ADVISORY FIRM

800.887.0437 vicpa.com
Kentucky Ohio Indiana



JGA Johnson
Grossnickle+
Associates

FREE Webinar
Giving USA 2016: Findings and
Implications

June 28 • Register Now



TRENDS / RESOURCES

National news



[Giving in an election year: A new report on charitable giving in a political climate.](#)

Wondering how donor support will fare in the face of federal and presidential political campaign competition? Check out data from the 2012 presidential race to provide fundraising insight during a past election year.

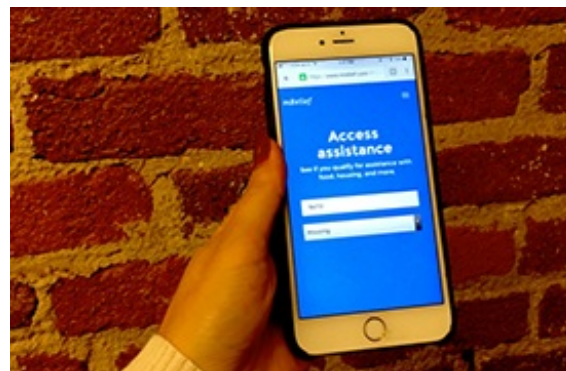


[Five tips for turning advocates into volunteers.](#)

Advocates are a vital piece of any nonprofit's support system and their intangible encouragement matters just as much as monetary donations. Advocates aren't just voices of support, though, they're also a resource for increasing a nonprofit's volunteer base.



[New nonprofits challenges.](#) What governs the survivability of new organizations? What is at stake, and what choices do organizations face along the road to maturity? This article reviews theories on the life cycle – related threats and opportunities that await young nonprofits.



[mRelief is helping ensure low-income kids get access to meals this summer.](#) During the school year, 22 million U.S. children, and with this new web and text messaging tool these low-income families can figure out where and when they can receive free or discounted meals this

Sponsors' insights

IACED. [2016 General Assembly session summary: Wins and concerns for community economic development.](#) IACED's top priority for the 2016 session was to support enactment of legislation to clarify that properties wholly owned by 501(c)(3) nonprofits that operate 100 percent affordable housing are considered property tax exempt throughout every county in Indiana.

VonLehman CPA & Advisory Group. [Six forward thinking and key components of a business budget.](#) Here is an overview of areas any organization may consider as key to its budget.



MARKETPLACE

Services

Our sponsor marketplace serves to further connect our readers with our advertisers who are focused on serving nonprofits. Please keep in mind that you should always check references before hiring a consultant or vendor. Contact Bryan at Bryan@charitableadvisors.com or 317-752-7153 to learn how your business or organization can become a sponsor of the Not-for-Profit News.

Legal/Administrative

Charitable Allies: nonprofit that provides affordable, experienced nonprofit legal services.

Human resources

Synergy: professional employer organization (PEO), Synergy assumes the risk and liability of employing employees, and administers payroll, benefits and human resources.

FirstPerson: professional advisory firm that creates meaningful work experiences through benefits, HR and wellness solutions.

Technology, software, services

FTM LLC: software advisor to improve organization's financial operations with system implementation, training and support.

Netlink, Inc.: An information technology service provider delivering best practice information, technology guidance, implementation and support in order to contribute to nonprofits' mission and success.

Finance/accounting/bookkeeping

Banking/asset management

The National Bank of Indianapolis: the bank of choice for nonprofit organizations.

Transition/retirement

Alerding CPA Group: provides board governance, training, consulting and succession planning.

Charitable Advisors: BoardSource-certified governance trainer, support for board-led ED/CEO search process.

Metamorphosis Change

Agents: Specializes in leadership transitions and organizational development for small to mid-sized nonprofits and associations.

Education/training

School of Public and Environmental Affairs at IUPUI: At SPEA, people learn how to work in government, nonprofit and business roles to make positive changes in their communities, their states, their countries and the world.

Alerding CPA Group: accounting firm with nonprofit experience provides audits, accounting, tax services, planning and board governance.

BKD: CPAs and advisors offering services in assurance, tax, risk management, technology and forensic to closely-held businesses, nonprofit organizations and individuals.

FTM LLC: works solely with nonprofits on bookkeeping, audit preparation, outsourced controller and CFO services.

VonLehman CPA & Advisory Firm: serves over 300 diverse nonprofit clients by providing expertise in assurance services, accounting, tax, internal controls, OMB compliance, performance improvement, board governance and consulting.

Fund development

The Indiana Philanthropy Alliance: brings back its Directory of Indiana Grantmakers. The searchable, online database, includes profiles for over 1,000 funders of Indiana nonprofits. Pre-order now for early-bird pricing; available at the end of the first quarter.

Johnson, Grossnickle and Associates: Authentic strategic and philanthropic consulting firm that offers client-focused, highly-customized solutions. The firm specializes in assisting nonprofit groups with strategic planning, capital campaigns, development audits, feasibility studies and general fundraising counsel.

Indiana University Lilly Family School of Philanthropy: Our programs are the first in the nation to focus on philanthropy's history, culture and values. Through traditional or online master's degree programs, gain the knowledge and skills necessary to pursue further graduate study or to enter the field as a nonprofit professional.

The Indiana Association for Community Economic Development (IACED): supports a network of organizations to build vital communities and resilient families through community building, training, technical assistance and advocacy.

Trine University: The School of Professional Studies is dedicated to serving adult students. Offering bachelor and master degrees with coursework both on-site and online. Accelerated classes start every eight weeks and multiple tuition discounts are available for those who qualify.

Leadership Development

The Heart Projects by Stefanie Krievins: Leadership coaching and personal development for nonprofit staff, volunteers and board members to help get the right projects done with heart.

Leadership Indianapolis: develops and mobilizes a robust pipeline of community leaders to address and solve the issues and opportunities facing the growing metro area.



Accounting Solutions
for your nonprofit

Bookkeeping CFO Advisor
Accounting Software Advisor
Controller

www.ftmllc.com | info@ftmllc.com | 888-609-5692

Take your career to the next level; earn your
M.A. in Philanthropic Studies
from anywhere in the world!

EXECUTIVE MASTER'S PROGRAM
COMPLETE YOUR DEGREE IN JUST THREE YEARS!

 IUPUI
LILLY FAMILY SCHOOL OF PHILANTHROPY

[Learn more!](#)

Real estate

[PLACE A REAL ESTATE AD](#)

Get that extra office space leased or that extra building sold by using the new NFP News real estate section to let people know you have extra space, an extra building or even residential property for sale. Photos and a web link may be included to give readers more information. To learn more, contact Julie at Julie@CharitableAdvisors.com



Affordable Near-Southside office space

DOWNTOWN 300 to 10,000 sq. ft. Great location at I-65 and South Keystone Avenue (3530). Five minutes from downtown with easy access to all Indianapolis. Free parking. Many restaurants nearby. Other nonprofits on site. Low rates: \$10 to \$12 per square foot depending on space size. Call Ron at: 317-702-6079.



The Sol Center is the perfect place for your next gathering

Host your next business meeting, board meeting, social gathering or board retreat at the Sol Center, home to Meals on Wheels. Located downtown, its 2,500-square-foot ballroom is handicap accessible and seats 150 people. The space offers such amenities as a state-of-the-art A/V system, dual 10 ft. x 7 ft. ceiling-mounted screens, small stage and podium, a caterer's

staging kitchen, coatroom and free-lighted parking. Rental income is used to subsidize meals for our low-income clients. For information, contact Barb Renshaw at 317-252-5558.



For emerging nonprofits

Nonprofit co-working office space in historic Lawrence Village near Fort Harrison State Park. The co-working space, 6,800 sq. ft., is fully furnished and includes WiFi, elevator access and parking and is offered by Launch Cause. The nonprofit is dedicated to helping emerging nonprofit organizations. Multiple leasing options are available and space scholarships.

[Learn more.](#)



Westside church for sale

1402 N. Bellevue Place, asking price is **\$700,000**. Spacious three-level church (18,900 square feet) with 600-seat sanctuary capacity; lower-level fellowship hall; beautiful stained glass windows; heated baptism pool; commercial kitchen. Plenty of options for office and classroom space. Great location for community outreach; located five minutes from downtown on a bus line. Facility has been approved for childcare ministry operation as well. For more information, please call the church office at 317-635-1942.



Located on the IUPUI campus

A full-service commercial office building with a total of approximately 9,400 rentable square feet located on the third floor. The space has two individual suites - one approximately 1,900 square feet and the second 7,400 rentable square feet. Close to Indianapolis downtown retail and dining facilities, just off Indiana Avenue and West Street. Parking near the offices.

Space is available for tenant occupancy. For more detailed information, please contact Thomas M. Popcheff at


tomp@stti.org or 317-634-8171.



Small, unique Mass Ave office

Small, unique Mass Ave office in the historic Athenaeum. The Athenaeum is home to multiple nonprofit organizations with a range of missions. This 224-square foot space is within walking distance of bustling Mass Ave and all of downtown Indy. The north wall is lined with windows for great light. For more information and a visit, please contact Cassie Stockamp at 317-655-2755 or Cassie@athfound.org.

Audit - Review - Compilation
 TAX & ACCOUNTING SERVICES
 GOVERNANCE EDUCATION




changing how you feel about IT

Technology Guidance & Support for the not-for-profit community.



This week's jobs

PLACE A JOB AD

To view all jobs, visit the [Not-for-profit News jobs' board](#).

Job ad special of \$77 for Intern/Americorps posts through May. Please send ad copy to Kristen at ads@notforprofitnews.com. Deadline is Sunday evenings for Tuesday's newsletters.

EXECUTIVE

Executive Director - Indy Reads. The Executive Director is responsible for overall leadership, strategic planning, fundraising, media relations, and day-to-day management and oversight of Indy Reads. The Executive...[more](#)

FUND DEVELOPMENT

Chief Philanthropy Officer (CPO) - Indiana University Health (IU Health). The new CPO will create one IU Health Foundation with centralized operations and alignment in purpose and strategy. In achieving this future state of philanthropy, this executive will...[more](#)

Director of Resource Development - United Way of Delaware County, Inc. Many people say they want to have a real impact on the lives of others, but few truly get that opportunity. Here is a chance to be a leader with an outstanding organization that is...[more](#)

Deputy Director of Development - Best Buddies. The Deputy Director of Development collaborates with the State Director to secure revenue for statewide programs and to promote the mission of Best Buddies. Specifically, the DDOD is...[more](#)

The Capacity Building Manager - United Way of Central Indiana. Under the direction of the Agency Services Director, the Capacity Building Manager will manage and implement a variety of projects that support human services organizations...[more](#)

Foundation and Corporate Giving Manager - Boys & Girls Clubs of Indianapolis. Our Foundation and Corporate Giving manager will work with the Director of Donor Engagement to identify, apply, receive, manage, and report on grants from foundations...[more](#)

Office of Resource Development Associate - Global Ministries. Global Ministries, the shared mission witness of the Christian Church (Disciples of Christ) and the United Church of Christ seeks an Associate for Resource Development. The position...[more](#)

FINANCE

Financial Controller - Indiana Donor Network. This position is responsible for day-to-day team and operations leadership related to Accounting, accounts payable, accounts receivable, budgeting, reporting, forecasting...[more](#)

Assistant Controller - Indianapolis Museum of Art. The Assistant Controller will oversee designated financial operations of the museum and support the Controller in overseeing key administrative support functions within the Finance...[more](#)

Staff Accountant - Early Learning Indiana. Early Learning Indiana is seeking a Staff Accountant to manage our many federal grants. You'll be developing budgets, filing claims, learning the ins and outs of regulations, and...[more](#)

Guiding positive change.

We can help your organization transition to something greater.

Metamorphosis
Change Agents

Streamlining Indiana GRANT SEEKING

DIRECTORY OF INDIANA *Grantmakers* 2016

Indiana Philanthropy Alliance
Champion. Support. Connect.

BACHELOR AND MASTER DEGREES to fit your schedule

TRINE UNIVERSITY | AVON

avon@trine.edu • 317.954.1209
trine.edu/adult-studies

MARKETING/COMMUNICATIONS/ EVENTS

Events Manager - Indiana Sports Corp. The Events Manager will provide event leadership and direction through the planning and coordination of ISC events. Event support will also be provided for functional areas of ISC...[more](#)

ADMINISTRATIVE/MANAGEMENT

Administrative Specialist - Indiana Primary Health Care Association (IPHCA). The Administrative Specialist reports to the Health Center Controlled Network (HCCN) Director and performs advanced administrative functions, along with day to day support activities for...[more](#)

IT/IS

HMIS Manager - United Way of Central Indiana. Lead the promotion and implementation of the Indianapolis Homeless Management Information System (HMIS) in support of the Indianapolis Continuum of Care. Scope of work...[more](#)

Health Information Technology Director - Indiana Primary Health Care Association (IPHCA). The Health Information Technology (HIT) Director reports to the Health Center Controlled Network (HCCN) Director. The HIT Director guides and supports information technology...[more](#)

PROGRAMS

Training Coordinator - Indiana Primary Health Care Association (IPHCA). The Training Coordinator supports the Health Center Controlled Network (HCCN) and other...[more](#)

Regional Chapter Coordinator - Kappa Delta Pi, International Honor Society in Education. The Regional Chapter Coordinator is responsible for serving the institutional chapters within a U.S. region. The position assists officers and counselors of the collegiate chapters in their...[more](#)

Quality Improvement Coordinator - Indiana Primary Health Care Association (IPHCA). The Quality Improvement (QI) Coordinator reports to the Community Health Center (CHC) Programs Manager. The QI Coordinator provides coordination and direct support to Health...[more](#)

Program Managers (part-time) - Camptown, Inc. If you are looking for a mission to serve disadvantaged youth, Camptown is the place for you. We are looking for passionate men and women to help us bring the wonders of creation to...[more](#)

Art Teacher (part-time) - Lutheran High School of Indianapolis. This part time position requires approximately three hours every day in a studio setting of a private Christian high school instructing introductory, intermediate, and advanced levels...[more](#)

Volunteer Manager - Indiana Sports Corp. The Volunteer Manager will be responsible for overseeing the future direction of Indiana Sports Corp's volunteer program. Through the recruiting of new volunteers while maintaining strong...[more](#)

Volunteer Coordinator (part-time) - Horizon House. Work with individuals and groups on volunteer needs within Horizon House to make a difference in the lives of people experiencing homelessness. Develop favorable rapport with...[more](#)

JAG (Jobs for Americas Graduates) Specialist - Interlocal Association. The JAG Specialist will provide assistance to the non-graduate to complete high school graduation requirements or a GED certificate and provide graduates with employment...[more](#)



[BACK TO TOP](#)



The nonprofit lawyers

charitableallies.org

317.429.1649

**BETTER
LEADERS.
STRONGER
ORGANIZATIONS.**

Learn more: exceedspea.lu.edu

 EXECUTIVE EDUCATION



Last week's jobs

EXECUTIVE

Executive Director - Indiana Chapter of The ALS Association. Bring your passion and leadership to join the fight against ALS! The Indiana Chapter of the ALS Association is seeking an energetic, mission driven professional to lead our statewide...[more](#)

Tocqueville Society Director - United Way of Central Indiana. Lead United Way of Central Indiana (UWCI) strategies and activities primarily, but not exclusively, to grow the giving and engagement of members of the Tocqueville Society and...[more](#)

Community Impact Director - Indiana Association of United Ways. Join an exceptional team that puts its members first. The Community Impact Director leverages and manages local, state and federal grants and fosters measurable local...[more](#)

Supply Chain Logistics Management Faculty - Vincennes University. Vincennes University Logistics Training and Education Center (VU LTEC) is seeking a full-time non-tenure track faculty member for the Supply Chain Logistics Management program...[more](#)

FUND DEVELOPMENT

Senior Director of Development - Purdue Research Foundation, University Development Office. The Purdue Research Foundation, University Development Office has an opening for a Senior Director of Development in Chemical Engineering. The Senior Director of...[more](#)

Business Development Representative - Fairbanks. The Business Development Representative cultivates relationships with referral sources in an assigned geographic territory who can refer potential patients for treatment to the...[more](#)

Community Manager, Wabash Valley (part-time) - Susan G. Komen Central Indiana. Manages fundraising activities and mission delivery in the Wabash Valley area. Identifies, cultivates and stewards local sponsors, Race for the Cure teams, fundraising events...[more](#)

Outreach Assistant, Student Series (part-time) - Leukemia & Lymphoma Society (LLS). Would you like to get paid to help cure cancer, while maintaining a family-friendly schedule? The Leukemia & Lymphoma Society (LLS) is dedicated to a world without blood cancers...[more](#)

Donor Relations Manager - Indiana Repertory Theatre. The Donor Relations Manager is responsible for planning, implementing and evaluating development efforts aimed at individual constituents in the Donor Guild (giving less than...[more](#)

FINANCE

Accounts Payable Specialist - JCC. The Accounts Payable Specialist is responsible for all aspects of accounts payable processing, preparing the daily deposit, and maintaining all filing in the accounting office...[more](#)

MARKETING/COMMUNICATIONS

Communications and Marketing VISTA - Marion County Commission on Youth (MCCOY). Our VISTA will be building community partnerships and relationships; expanding our reach to untapped and needy audiences who will benefit from our services; examining and updating...[more](#)

ADMINISTRATIVE/MANAGEMENT

Administrative Specialist - Methodist Health Foundation. We are seeking a motivated and talented individual for a full time position who will be responsible for financial data entry. You will use

specialized ledgers and accounting software...[more](#)

Executive Assistant - Indiana Repertory Theatre. The Executive Assistant supports the Executive Artistic Director and Managing Director (60%) and the Development Department (40%). This position will be responsible for the...[more](#)

PROGRAMS

Program Director, No Place to Call Home - KIC-IT (Kids In Crisis Intervention Team). The Program Director oversees and is responsible for the planning, coordination, implementation, management, supervision and evaluation of a new homeless initiative in...[more](#)

Neighborhood Development Specialist - Indianapolis Neighborhood Resource Center. The Neighborhood Development Specialist will support neighborhood-based organizations, neighbors and community partners through facilitation and the provision of technical...[more](#)

Youth Leader(s) (part-time) - Union Chapel United Methodist Church. Union Chapel United Methodist Church is a growing church of Open Doors, Open Hearts and Open Minds, working tirelessly to reach the community around us for the mission of...[more](#)

Program Manager (Interfaith Hospitality Network) - Family Promise of Greater Indianapolis. Family Promise offers a unique position to not only work directly with families experiencing homelessness, but also bring awareness of homelessness to over 2,000 volunteers from the...[more](#)

Program Coordinator (Part-time) - School on Wheels. School on Wheels is seeking a Program Coordinator to manage the tutoring hour at two of our tutoring sites. The position requires working with K-12 youth and their families, adult volunteer tutors, and school systems to provide educational support to our students...[more](#)

Middle School Teaching Assistants: Math, Spanish and Language Arts - Sycamore School. Sycamore School is seeking multiple teaching assistants for its middle school students for the 2016-2017 school year. We are looking for a Math Teaching Assistant, Spanish...[more](#)

Nutrition Education Program Assistant - Purdue Extension. Purdue Extension Nutrition Education Program is seeking qualified individuals to teach and provide relevant nutrition and health information locally. Good teaching, communication and...[more](#)

Wellness School Manager (Part time) - JCC. The Wellness School Manager plays a key administrative, marketing and service delivery in the JCC Fitness department...[more](#)

INTERNS/VISTAS

Video and Digital Content Intern (part-time) - Sycamore School. This is a part time paid stipend internship position with our Marketing and Advancement Team at Sycamore School as our Video and Digital Content Intern. Sycamore School exists...[more](#)

Early Intervention and Prevention VISTA - Marion County Commission on Youth (MCCOY). Our VISTA will be engaged in hands-on work with neighborhood residents; recruiting and training the NEAT squad members; building partnerships with local social service providers...[more](#)

Charitable Advisors
Leadership Transition · Planning · Not-for-Profit News

Charitable Advisors LLC
P.O. Box 501245
Indianapolis, Indiana 46250
317-752-7153

Not-for-profit News serves as a champion for the nonprofit sector by publishing good news and sharing educational resources to inform the field. We feature new nonprofit job postings each week to attract capable people to the sector.